

magazine2019

FAR
flow evolution

  YouTube
www.far.eu

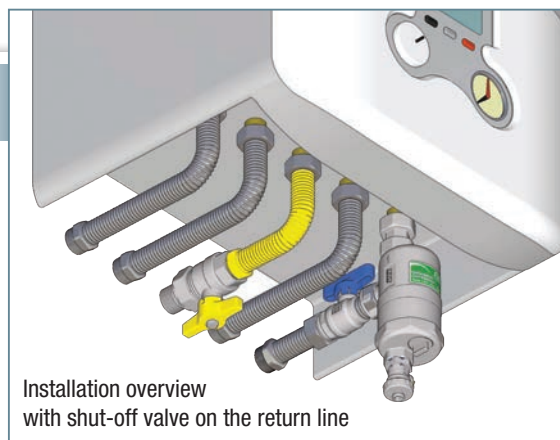
compactFAR Dirt separator



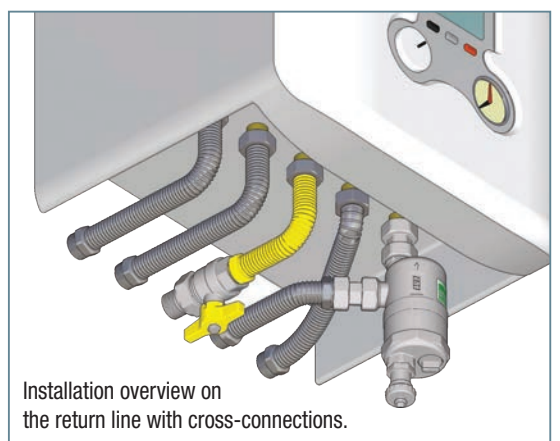
compactFAR with angled connection



The new CompactFar dirt separator has been designed to protect domestic boilers from any impurities which can be found in the heating system. The internal cartridge allows to separate from water the impurities and the ferrous particles which could damage the boiler. The impurities can be flushed by removing the magnetic insert.

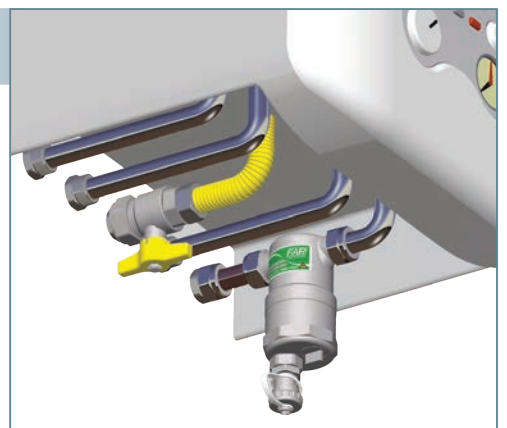


Installation overview with shut-off valve on the return line



Installation overview on the return line with cross-connections.

compactFAR with straight line connections



This special version has been designed to be installed under boilers with Ø 18 mm copper pipe connections.



Eurokonus connection




Flat faced connection



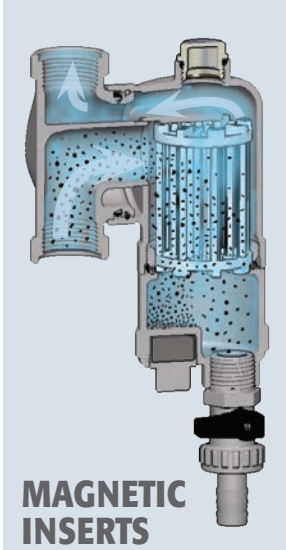
3/4" Flat faced wall connection



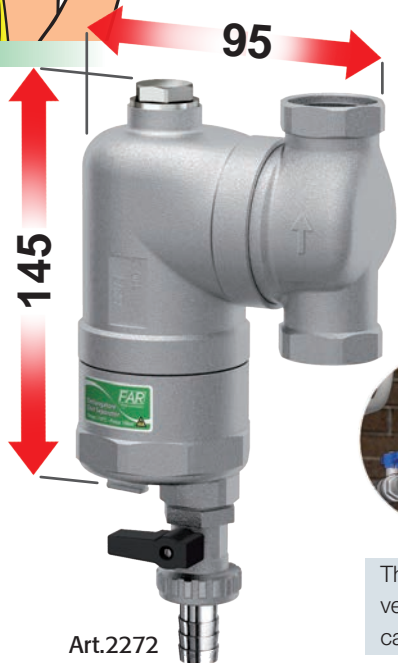
3/4" Eurokonus wall connection




Components for central heating *Smart* Dirt separator





**MAGNETIC
INSERTS**



Art.2272



Art.2271
Complete with
shut-off valves

The swiveling dirt separator can be installed on the pipeline in either vertical or horizontal position, as the part with threaded connections can rotate through 360° around its own axis.

DIRT SEPARATORS	COMBIFAR	DEAERATORS
 Art.2200  Art.2241	 Art.2231 	 Art.2250  Art.2258

The range of FAR dirt separators and deaerators offers a wide choice of articles:

- Fixed and swiveling connections (according to the versions)
- Dirt separators with or without magnetic inserts
- Equipped with insulation
- Combined dirt separators-deaerators

Sizes:
Threaded: 3/4" - 1" - 1" 1/4 - 1" 1/2 - 2" (according to the versions)
Flanged: DN50 - DN65 - DN80 - DN100 (according to the versions)

NEW Acid condensate neutralizer for boilers

Complete with:

- n° 1 elbow with 3/4" nut and hose union connection
- n° 1 straight fitting with 3/4" nut and hose union connection
- n° 1 granular recharge
- n° 1 support for wall fixing

The acid condensate neutralizer is a device that, when installed on the drain pipe of a condensing boiler, regulates the water pH, making it alkaline.

This protects the pipes and the drain gutters that, over time, would be corroded by the acidity of the condensate.



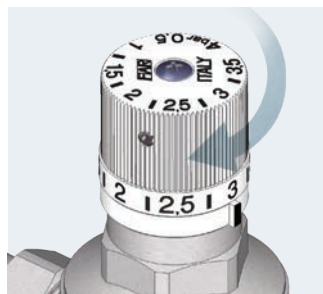
It is recommended that the granular recharge is replaced annually to ensure it continues to correct the pH for ongoing protection.

Art.2400

New automatic filling unit

Installation of the new automatic filling unit is recommended for heating and air-conditioning systems. Such a device is able to fill the system up to a pressure between 0,5 and 4 bar.

It is equipped with 1/2" connections and it stands a maximum upstream pressure of 10 bar and a maximum temperature of 95°C.



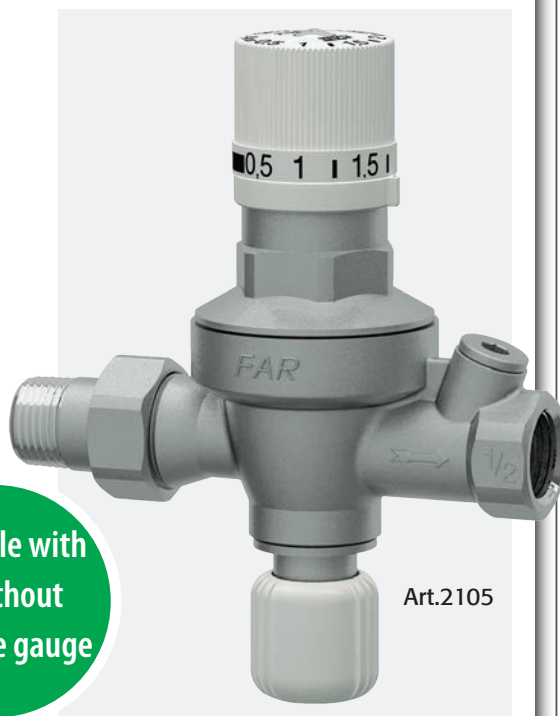
Turn the handle in the upper section of the device in order to set the pressure, until you reach the desired value. An anti-tampering locking screw is located on the handle side.

The automatic filling unit is equipped with stop cock, non-return valve and pressure gauge connection. The device is supplied with a strainer to grant a better functioning of the component and to stop any impurities which can be found in the system.

Technical features:

- Inlet connection (unit): 1/2" male
- Outlet connection: 1/2" female
- Pressure gauge connection: 1/4" female
- Max. working temperature: 95°C
- Minimum working temperature: 5°C
- Max. upstream pressure: 10 bar
- Set pressure: 0,5÷4 bar

Available with
or without
pressure gauge



Art.2105

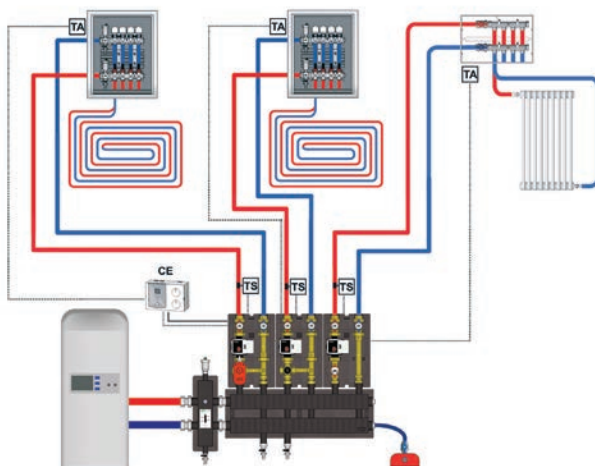
Systems for central heating

FAR offers a wide range of products designed for small and medium central heating systems. All booster units feature 1" connections and are equipped with high efficiency pump with 6, 7 or 8m.



Art.2166

Booster unit for high temperature, complete with pump and insulation.



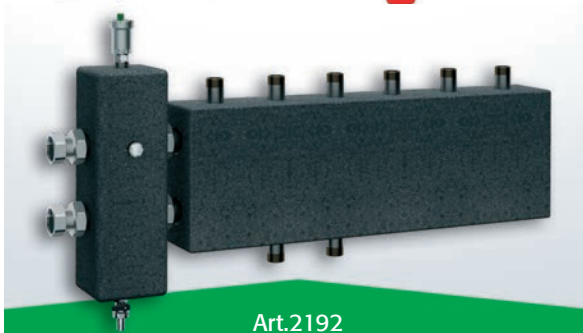
Art.2177

Booster unit for high temperature complete with 4 shut-off valves, differential by-pass, pump and insulation.



Art.2167

Set point booster unit, complete with thermostatic mixer, pump and insulation.



Art.2192

Distribution unit for central heating, complete with 1 1/4 hydraulic separator and manifold, suitable for use with up to four booster units.



Art.2178

Set point booster unit, complete with thermostatic mixer, 4 shut-off valves, differential by-pass, pump and insulation.



Art.2168

Booster unit, complete with mixing valve with 3-point actuator, pump and insulation.



Art.9611

Temperature control unit preset for climatic operation, complete with delivery probe and external probe.



Art.3012

New version with 0-10V actuator.



Art.2164

Hydraulic separator complete with flanged connections and insulation. Available sizes: DN50, DN65, DN80, DN100. Complete with drain cock and automatic air vent valve.



Art.2179

Booster unit, complete with mixing valve, 4 shut-off valves, differential by-pass, pump and insulation.

Zone valves



Art.3007-3008



Art.3005-3006



Art.3001-3002



Art.303915-304015



Art.307080-307180



Small actuators
new colors!

- 2, 3 and 4-way zone control ball valve equipped with on-off actuator.
- Actuator feed voltage: 24V or 230V
- Torque: from 6 to 35Nm
- Opening time: from 8s. to 80s.
- Zone control valve with quick-coupling installation
- Available sizes: 1/2", 3/4", 1", 1 1/4", 1 1/2" and 2"



Piston valves

NEW

The new FAR range of piston valves is designed for installation in heating and cooling systems.

All versions with 2, 3 or 4-ways are equipped with a handle for manual control and are suitable for the installation of a thermo-electric actuator.

The 2-way version can be used as a shut-off valve, while the 3 and 4-way valves are used to divert or mix the flow, according to the electric actuator connected.

Thanks to the nature of their performance and their compact size, this valve range is ideal for use as zone valves or for the installation in fan coils.

Available sizes: 1/2", 3/4", 1" (depending on the version)

Connections: Male Flat-faced

Tmax: 95°C

Pmax: 10bar

Dpmax: 3bar (2-way) - 1,5bar (3 and 4-way)

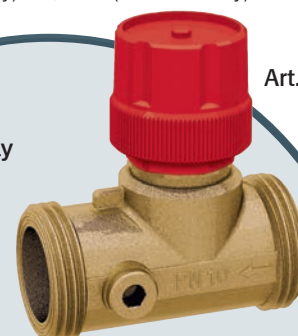


Art.3087

Art.3089

Art.3086

The 2 and 3-way versions are also available with balancing system and probe connection.



Art.3085

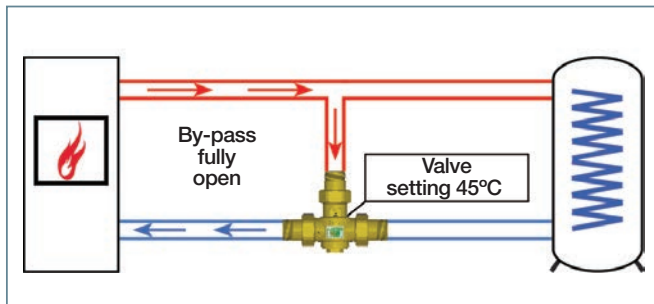
Anti-condensation valve



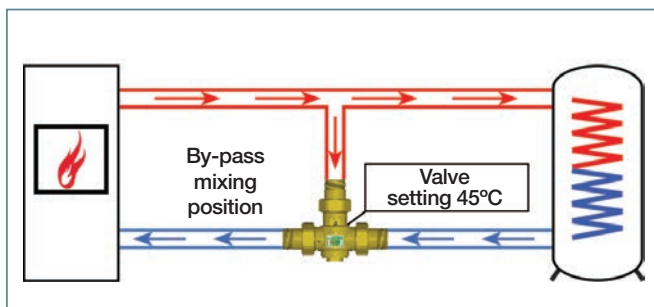
Art. 3966

The FAR anti-condensation valve, art.3966, prevents the formation of condensate in the circuits with solid fuel heat generators. Condensation and the consequent decrease of flue gas temperature can lead to corrosion and damage to both the heat exchanger and the flue. This phenomenon can reduce the efficiency of heat exchange and even lead to encrustation that could ignite at high flue gas temperatures.

1 - Water temperature coming from the generator : less than 45°



2 - Water temperature coming from the generator: close to 45°



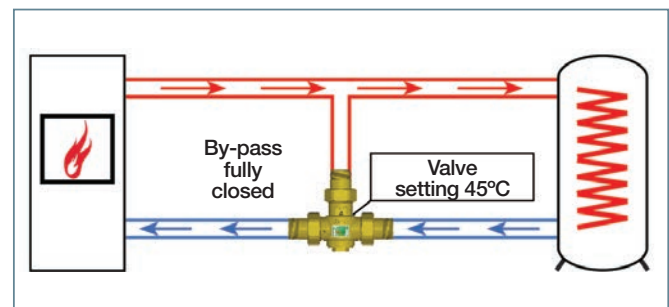
FUNCTIONING

The schemes below show the water flow in the circuit section from the heat generator to the tank. According to the temperature variations detected by the thermostatic sensor (set at 45°C), the valve adjusts the by-pass opening and closing, by means of a shutter.

AVAILABLE SETTINGS: 45°C - 55°C - 60°C - 70°C	
size	Kv [m ³ /h]
3/4"	3,9
1"	3,9
1"	11,3
1" 1/4	12,2

MALE CONNECTIONS
COMPLETE WITH UNIONS

3 - Water temperature coming from the generator: higher than 55°C



2-piece Fittings

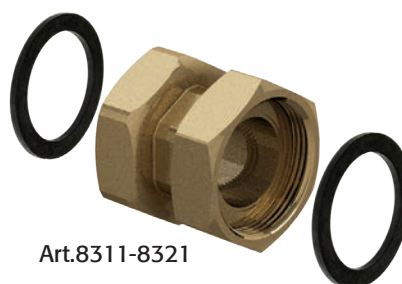
A new line of 2-piece fittings in brass, to simplify and speed-up the installation of the various components.

Available in MF or FF versions, from 1/2" to 2" sizes, with swiveling nut and matching threads or with swiveling nut and reduced threads at both ends of the fitting.

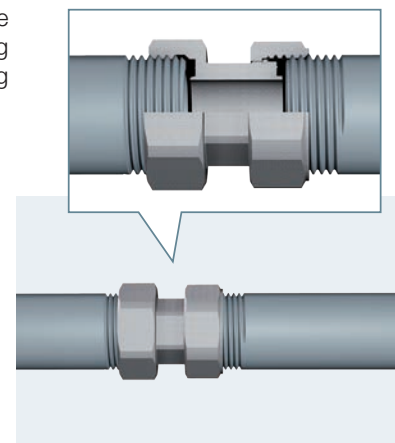
To ensure the seal, the fitting shape allows the use of flat EPDM gaskets or normal sealing systems such as hemp, ptef, etc. depending on requirements.



Art.8313-8323



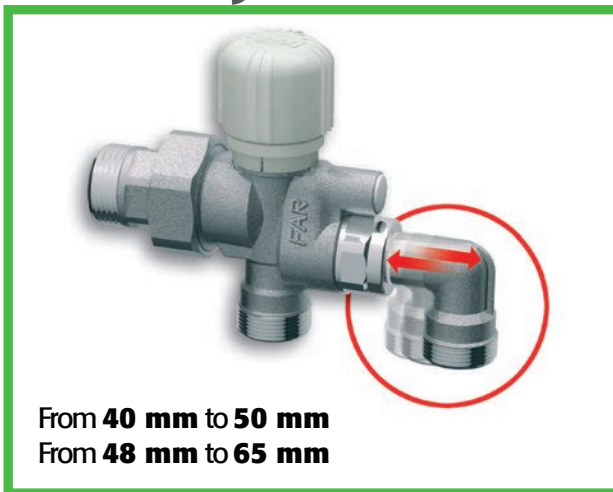
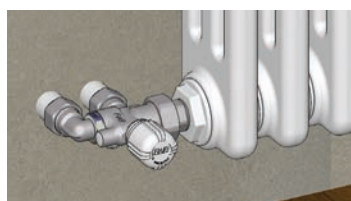
Art.8311-8321



Single/double pipe thermostatic valves with adjustable centre line



Art.1425



From 40 mm to 50 mm
From 48 mm to 65 mm



Art.1428



The single/double pipe thermostatic valves with adjustable centre line are suitable for installation into new and existing systems. Available with 40-50 mm and 48-65 mm centre line in 1/2", 3/4" and 1" size.



Thermostatic head

The new FAR thermostatic head, art. 1828, allows to adjust the room temperature from 7 to 28°C.

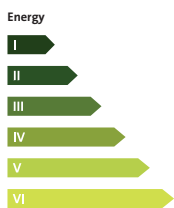
It is equipped with an integrated liquid sensor and a selector to limit or block the adjustment on the desired value.

For an easy installation, the head is equipped with a practical quick-coupling system.

TELL

Thermostatic Efficiency Label

Manufacturer FAR S.p.A.
Product 1828
Reg.-No. 10622-20170504



www.tell-online.eu
A label of EUnited Valves
European Valve Manufacturers Association



Art.1828

Art.1621

Keymark certification

Energy Classification



Top Design valves

FAR

a touch of class for your home!

To meet the new market trends, FAR offers a new range of design valves with a glossy chrome finish for radiators with 50 mm centre line connections. They are single/double pipe thermostatic valves with adjustable by-pass to meet the most different system requirements.

They are available in straight or angled version, with FAR 24x19 and Eurokonus connections and with 1/2" terminal provided with gasket or with swiveling nut.



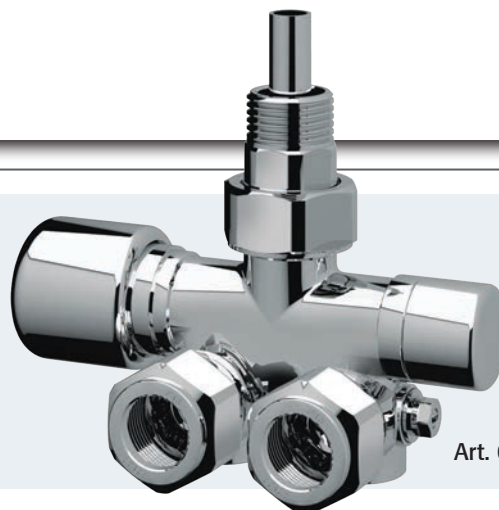
Art. 0266



Art. 0264

For design radiators with standard connections, FAR offers a single/double pipe thermostatic angled valve, in the right-hand or left-hand version, with FAR 24x19 connection and 1/2" connection to radiator with probe.

This version is available with a glossy chrome finish.



Art. 0286



Art. 0108P

Art. 0109P

The TOP series is completed with thermostatic valves and lockshield valves for traditional applications. They are available in straight, angled and right/left-hand version, in 3/8" and 1/2" size with gasket, with iron or FAR 24x19 connection. These versions are available in a glossy chrome or white/chrome finish.

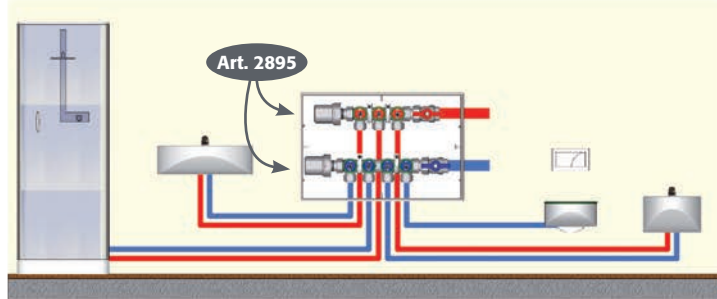
Water hammer arrester

Art. 2895



WRAS
APPROVED
PRODUCT

Art. 2896



Art. 2896

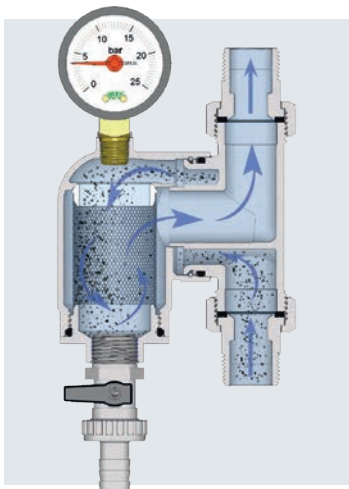
The water hammer arrester can be installed on the distribution manifolds or below the wash-basin.

The water hammer arrester for domestic services mitigates the effect of overpressure, preserving the correct functioning of the components in the system. The device can withstand a maximum pressure of 50 bar and a maximum working temperature of 90°C.

Swiveling strainers

The FAR swiveling strainers guarantee an accurate water filtering, thus preserving the functioning of installed components.

The input and output connections can rotate to adjust the strainer position according to the plant requirements.



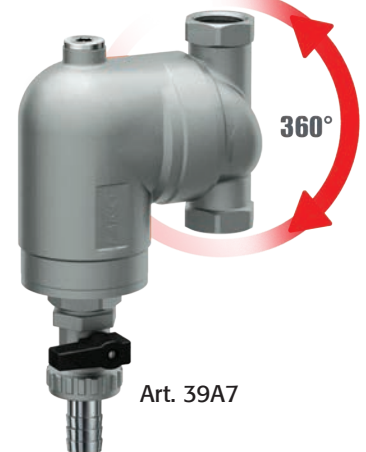
The incoming water follows a guided path entering the filtering net from above and then moves in a radial direction, getting rid of impurities. The particles thus stick to the net or fall down, accumulating near the drain valve.



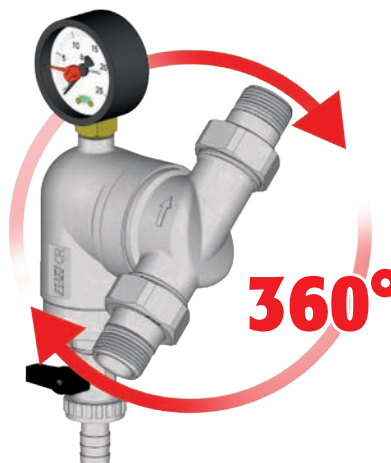
Art. 39A5



Art. 39A4



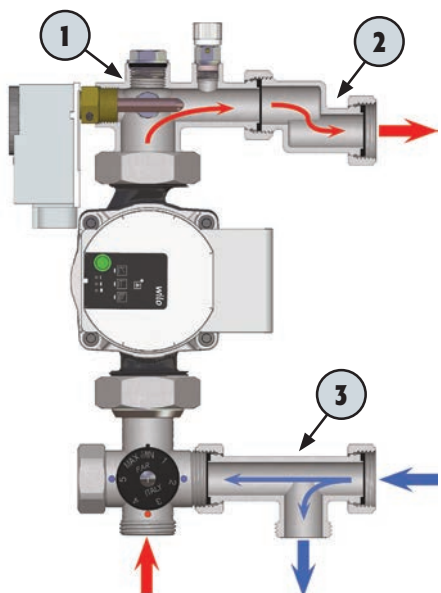
Art. 39A7



360°



NEW Set point regulating unit



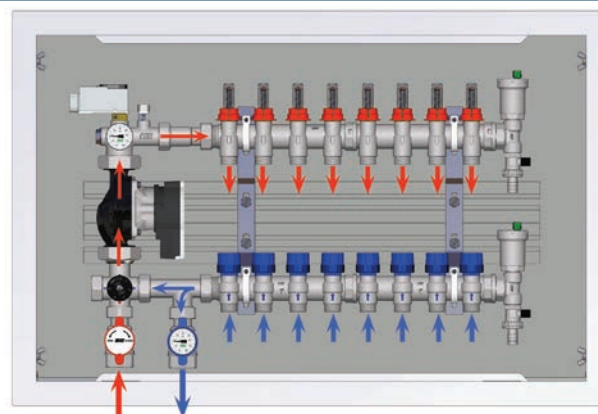
The Set Point Regulation version is suitable for heating systems: it can be manually adjusted by turning the handle of the thermostatic mixer to the desired flow temperature value.



Art. 3493

The pump should always be installed at the mixer outlet, in place of the brass extension piece. The mixed fluid coming from the pump passes into a fitting (1) on which it is possible to install a safety thermostat with a 1/2" connection. After the connection, the fluid passes through an eccentric (2) which allows it to adapt the centre line of the unit to one of the manifolds that will be installed. Fluid returning from the heating circuit passes through a fitting (3) that allows some of the water to re-enter to the boiler, while the remainder is diverted to the thermostatic mixer to mix with the high temperature water.

INSTALLATION OVERVIEW

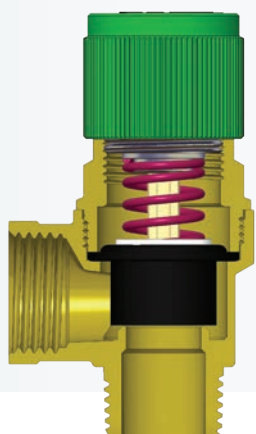


NEW

Safety valves

The new range of safety valves is suitable for heating and domestic systems. They are entirely manufactured in brass with a new design.

The internal components are designed to provide optimal discharge performances.



Art. 2011



Art. 2012

Technical features:

Set pressure: 3 - 6 - 7 bar Outlet: 1/2" F
Inlet: 1/2" Male and Female Max. temperature: 115°C

Under Certification

In accordance with 2014/68 UE "PED" class IV and with the Law n.26 of 15.02.2016








FAR - Factory in Gozzano (NO)



FAR - New factory in Gozzano (NO)



FAR - Factory in San Maurizio d'Opaglio (NO)

-  **UNDERFLOOR HEATING SYSTEMS**
-  **RENEWABLE ENERGY SYSTEMS**
-  **CENTRAL HEATING** ★ ★
-  **RADIATOR SYSTEMS**
-  **DOMESTIC SERVICES**

